

# Barry County Lumber

Since 1945

## 24 x 32 Deluxe Pole Barn Package

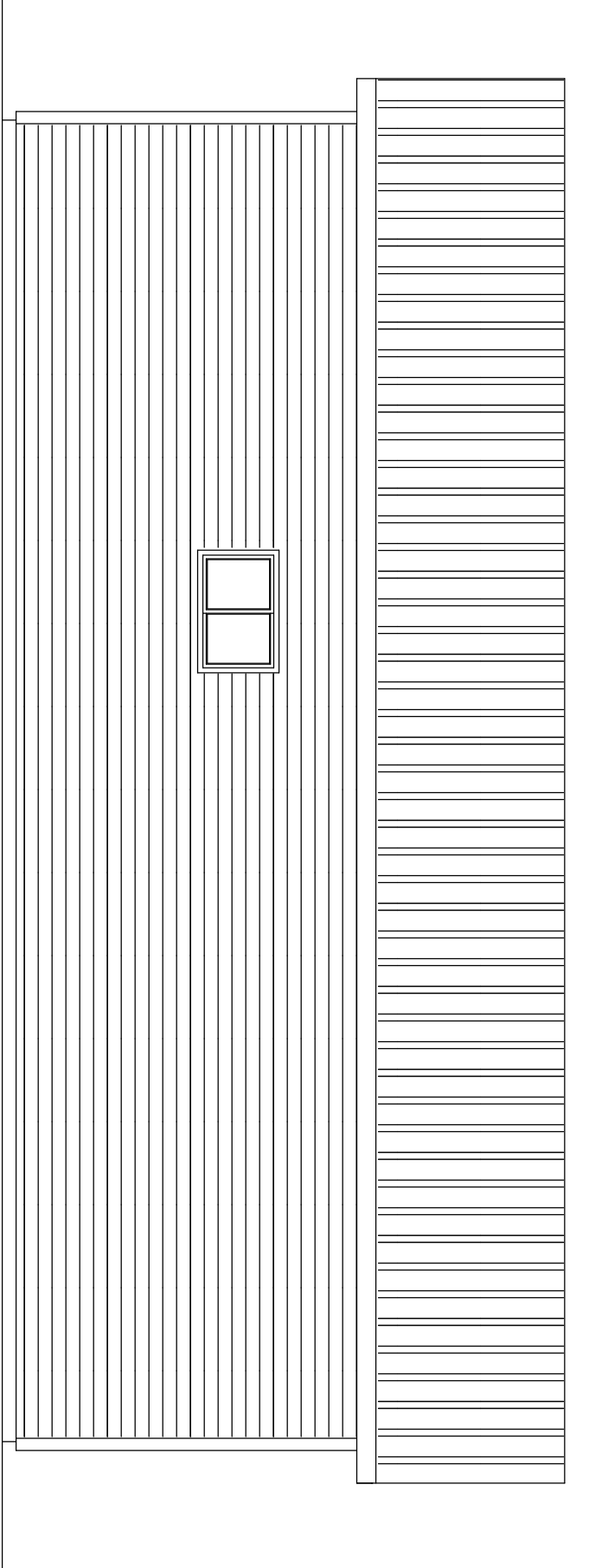
QTY	DESCRIPTION	ITEM #	USE
<b>POSTS</b>			
	GRAVEL MIX 60#	10163010	CEMENT (1 BAG PER POLE)
	4 X 6 - 12' #2 TREATED	01134260	POSTS
	2 X 6 - 16' #2 TREATED	01132300	BASE GUARD
	2 X 12 - 16' #1 SYP TREATED	01132900	TRUSS CARRIERS (2-PLY)
	2 X 12 - 18' #2 & BTR	01092920	GARAGE DOOR HEADER
	2 X 6 - 8' #2 & BTR SPF	01052220	WINDOW/DOOR HEADERS
	2 X 6 - 14' #2 & BTR SPF	01052280	GARAGE DOOR JAMB
	2 X 6 - 16' #2 & BTR SPF	01052300	GARAGE DOOR JAMB
	2 X 4 - 16' #2 & BTR SPF	01052130	WALL GIRTS (24" O/C)
<b>ROOF SYSTEM</b>			
	NON STOCK 24' 4/12 4'OC 40-LB	10442240	TRUSSES
	2 X 6 - 8' #2 & BTR SPF	01052220	TRUSS TIES
	2 X 4 - 16' #2 & BTR SPF	01052130	BRACING
	2 X 6 - 14' #2 & BTR SPF	01052280	LADDER FRAMING
	2 X 6 - 14' #2 & BTR SPF	01052280	SUBFASCIA
	2 X 4 - 18' #2 & BTR SPF	01072150	ROOF PURLINS
	LNFT GRIII PAINTED STEEL, 13'8" PCS	10100010	ROOF METAL
	O/S FILLER STRIPS GD RIB	10111520	ROOF METAL FILLER STRIPS
	I/S FILLER STRIPS GD RIB	10111530	ROOF METAL FILLER STRIPS
	AR 3 WHT RIDGE 10'6"	10112550	STEEL RIDGE CAP
	AC1 14'6" GABLE RAKE	10010000	GABLE END DRIP EDGE
	AJ 3 WHITE UTILITY 10'6"	10112620	STEEL UTILITY TRIM
	6" WHT ALUM FASCIA 12' 25/CTN	10121060	FASCIA/SOFFIT(12"OVERHANG)
	WHITE ALUM F-CHANNEL 12' 25CTN	10121140	FASCIA/SOFFIT(12"OVERHANG)
	A/D SNOW VNL SOLID/SOFFIT (PC)	10062000	FASCIA/SOFFIT(12"OVERHANG)
<b>VINYL SIDING</b>			
	7/16-4 X 8 OSB BOARD	01738060	WALL SHEETHING
	VINYL SIDING STARTER STRIP 10'	10063010	VINYL STARTER STRIP
	A/D SNOW O/S CORNER	10063070	VINYL OUTSIDE CORNER
	A/D SNOW UNDERSILL	10063040	VINYL UTILITY TRIM
	A/D SNOW MATTE 1/2" J-CHANNEL	10061900	VINYL J-CHANNEL
	SQ EASYCARE SNOW DBL4 12PC	10061400	DOUBLE 4 VINYLE SIDING

# Barry County Lumber

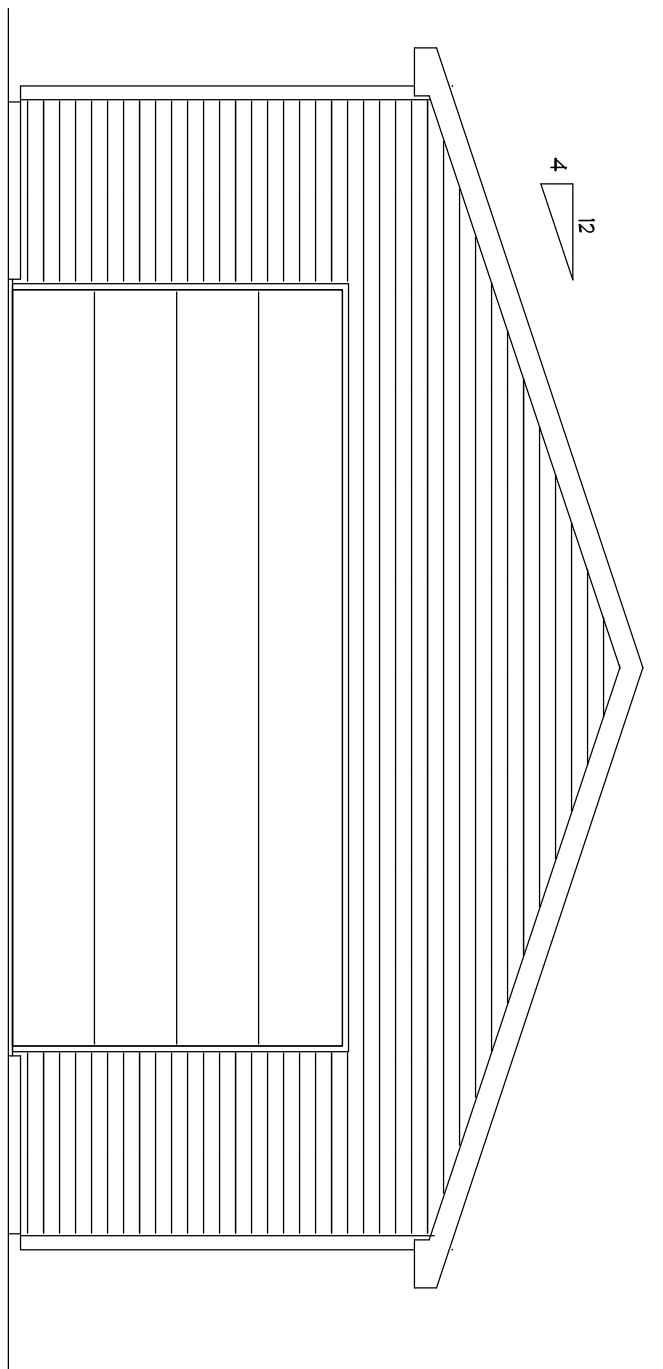
Since 1945

## 24 x 32 Deluxe Pole Barn Package

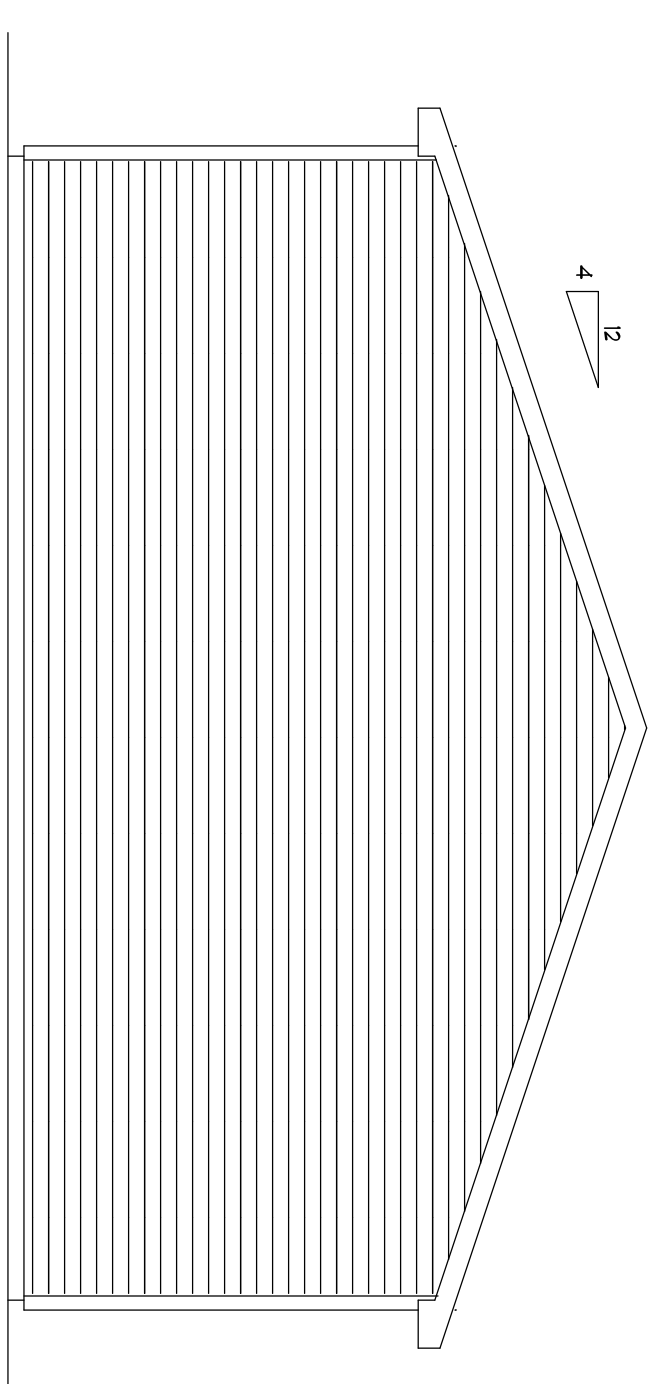
QTY	DESCRIPTION	ITEM #	USE
<b>FASTENERS</b>			
	5-LB 1-1/2" WHITE NEO NAIL	60274600	NEO NAILS FOR ROOF
	25 LB #16 GALV. ARDOX DECK	60266800	FRAMING NAILS
	5-LB 5" GALV POLEBARN NAIL	60274240	FRAMING NAILS
	25 LB #8D CC NAILS	60265130	FRAMING NAILS
	5 LB 1 1/4 " ROOFING NAILS	60269700	VINYL SIDING NAILS
	1 LB 1 1/4" ROOFING NAILS	60269650	VINYL SIDING NAILS
<b>GARAGE &amp; UTILITY DOOR</b>			
	16 X 7 #1000 INS WHT EXT	10700160	GARAGE DOOR
	16' WHITE GARAGE WEATHER STRIP	10720110	GARAGE DOOR TRIM
	7'WHT GARAGE DOOR WEATHER STRIP	10720050	GARAGE DOOR TRIM
	DOOR - 2/8 RH FLUSH STEEL	20130120	STEEL UTILITY DOOR
	WINDOW -- #3020 WHT/ALUM SLIDER	10866320	ALUMINUM WINDOW
	STEEL PRO - BRT/BRS KEYED ENTRY	30223100	STEEL DOOR LOCKSET



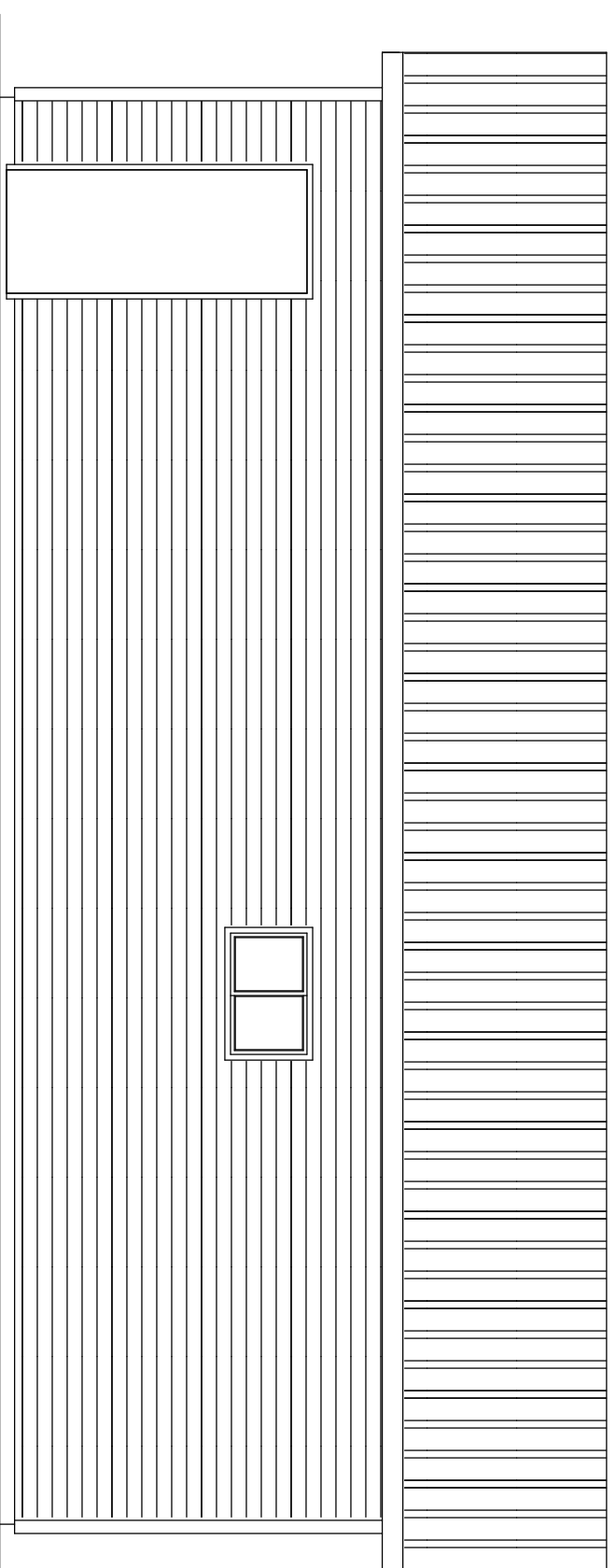
**LEFT ELEVATION**  
SCALE: 1/4" = 1'-0"



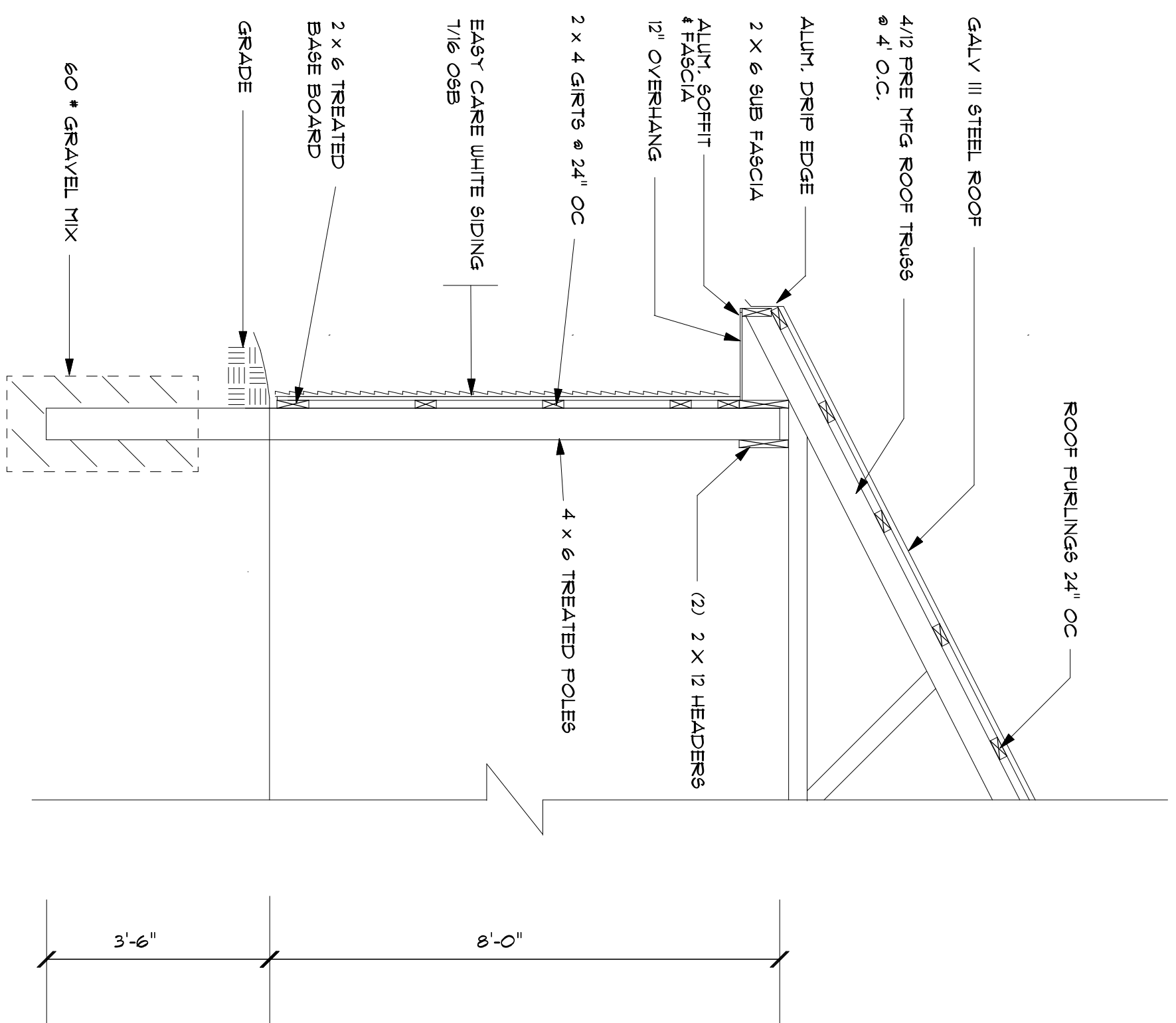
**FRONT ELEVATION**  
SCALE: 1/4" = 1'-0"



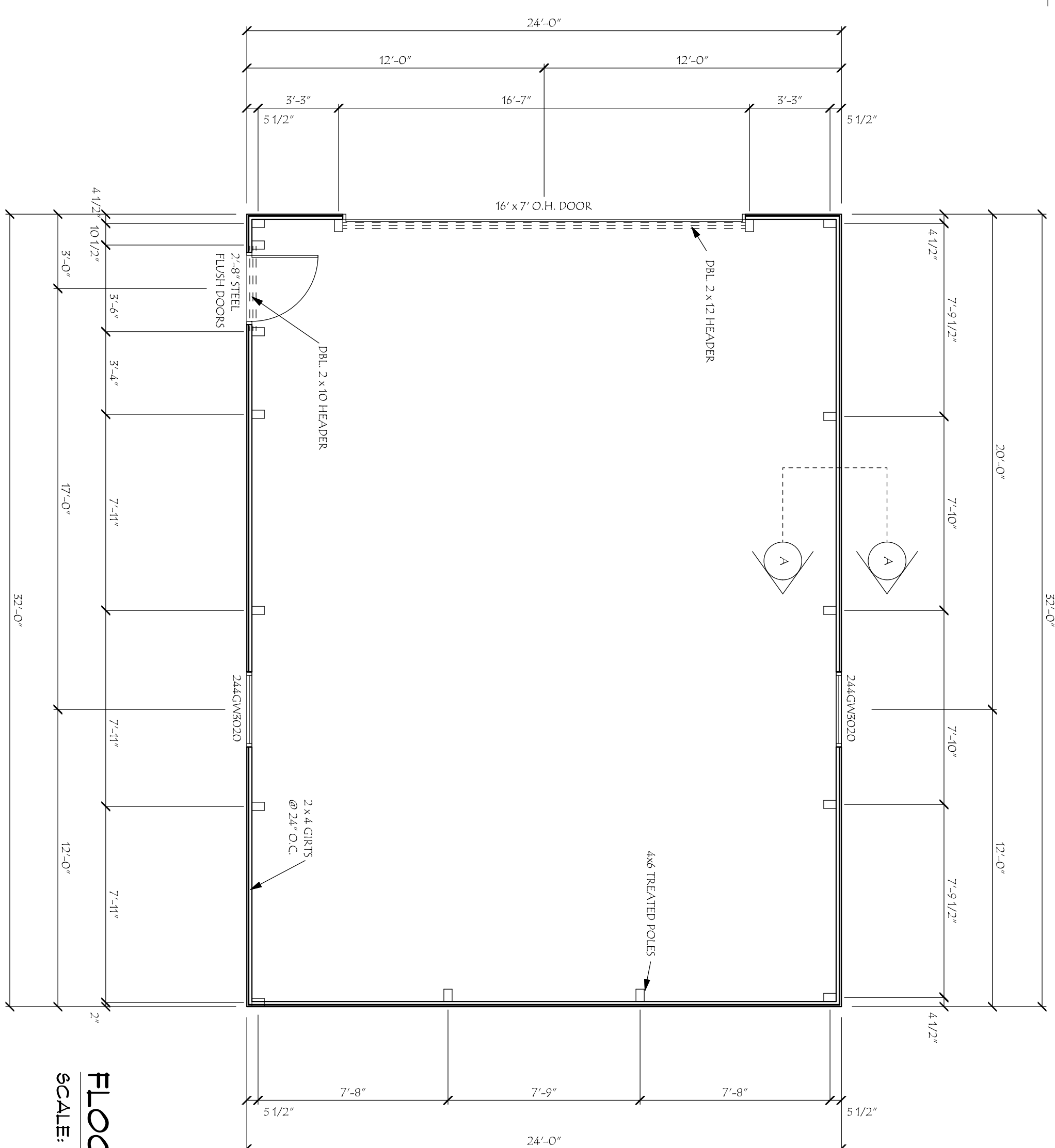
**REAR ELEVATION**  
SCALE: 1/4" = 1'-0"



**RIGHT ELEVATION**  
SCALE: 1/4" = 1'-0"



**SECTION A - A**  
SCALE: 1/2" = 1'-0"



**FLOOR PLAN**  
SCALE: 1/4" = 1'-0"

**Barry County Lumber**

Since 1945  
(616) 945-3431 • (888) 945-3431 • (616) 945-4020 (fax)  
225 N Industrial Park Drive - Hastings, MI 49058  
www.barrycountylumber.com

DRAWN FOR: DELUXE POLE BARN PACKAGE 24 x 32			
JOB: DELUXE POLE BARN PACKAGE 24 x 32		DATE: 12/26/05	
SCALE: AS NOTED	DATE: 12/26/05	APPROVED BY:	
DRAWN BY: MUS	REVISED:	CHECKED BY:	DRAWING NUMBER: 01024052

GREAT CARE AND EFFORT HAVE GONE INTO THE DESIGN AND ENGINEERING OF THE PLANS TO MEET THE SPECIFICATIONS SET FORTH BY THE CONTRACTOR AND/OR HOMEOWNER IN COMPLIANCE WITH BUILDING CODE REQUIREMENTS. CONTRACTORS SHALL VERIFY AND BE RESPONSIBLE FOR ALL DIMENSIONS, SPECIFICATIONS AND CONDITIONS ON THE JOB.