

# Barry County Lumber

Since 1945

## 24 x 40 Standard Pole Barn Package

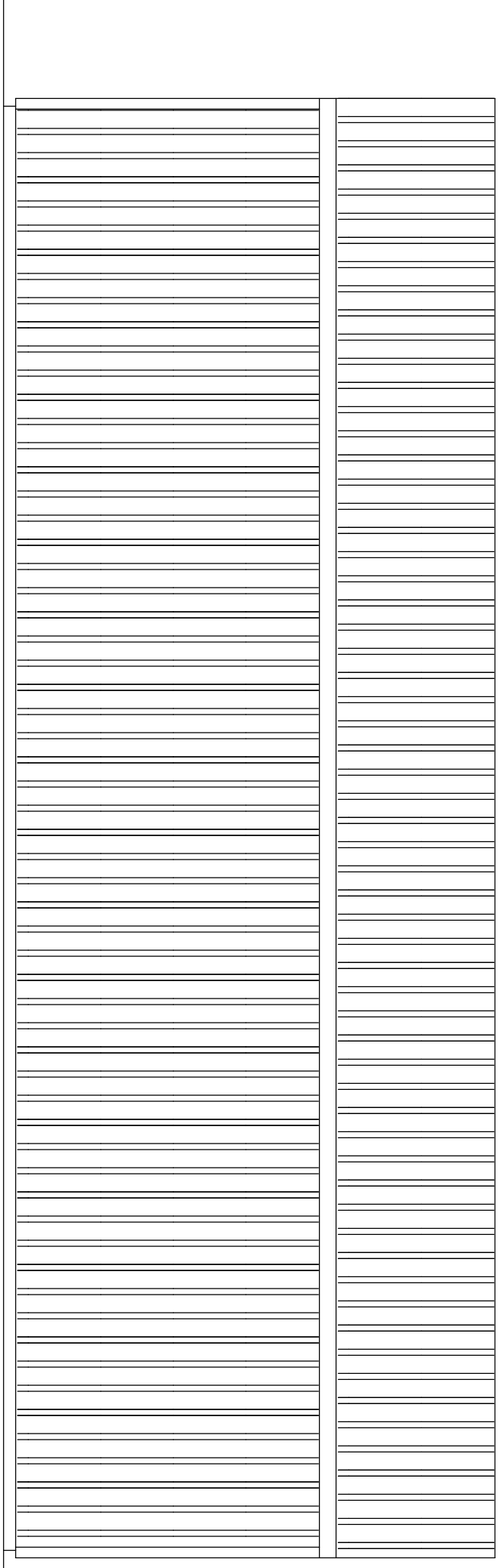
QTY	DESCRIPTION	ITEM #	USE
<b>POSTS</b>			
	GRAVEL MIX 60#	10163010	CEMENT (1 BAG PER POLE)
	4 X 6 - 12' #2 TREATED	01134260	POSTS
	2 X 6 - 16' #2 TREATED	01132300	BASE GUARD
	2 X 12 - 16' #1 SYP TREATED	01132900	TRUSS CARRIERS (2-PLY)
	2 X 12 - 16' #2 & BTR	01092900	SLIDING DOOR TRACK SUPPORT
	2 X 4 - 16' #2 & BTR SPF	01052130	WALL GIRTS (24"O/C)
<b>ROOF SYSTEM</b>			
	NON STOCK 24' 4/12 4'OC 40-LB	01042240	TRUSSES
	2 X 6 - 8' #2 & BTR SPF	01052220	TRUSS TIES
	2 X 4 - 16' #2 & BTR SPF	01052130	BRACING
	2 X 6 - 16' #2 & BTR SPF	01052300	FRIEZE BLOCKS
	2 X 6 - 14' #2 & BTR SPF	01052280	FLUSH GABLE FASCIA BOARD
	2 X 4 - 16' #2 & BTR SPF	01052130	ROOF PURLINS (24"O/C)
	GRIII GALV STEEL,12'8"PCS	10010000	ROOF METAL
	O/S FILLER STRIPS GD RIB	10111520	ROOF METAL FILLER STRIPS
	I/S FILLER STRIPS GD RIB	10111530	ROOF METAL FILLER STRIPS
	AC1 14'6" GALV GABLE RAKE	10010000	STEEL GABLE END RAKE
	AR3 GALV RIDGE	10111550	STEEL RIDGE CAP
	AJ3 GALV J-CHANNEL	10010000	STEEL J-CHANNEL
<b>STEEL SIDING</b>			
	ABG1 GALV BASE GUARD	10010000	STEEL BASE GUARD
	AC 1 GALV.O/S CORN. 4 3/8 X 10'	10111540	STEEL OUTSIDE CORNER
	GRIII GALV SDNG,8'6" PC	10010000	STEEL SIDING
	GRIII GALV SDNG,9'PC	10010000	STEEL SIDING
	GRIII GALV SDNG,10'PC	10010000	STEEL SIDING
	GRIII GALV SDNG,11'PC	10010000	STEEL SIDING
	GRIII GALV SDNG,12'PC	10010000	STEEL SIDING
	GRIII GALV SDNG,5'3"PC	10010000	STEEL SIDING
<b>8'x7' SLIDING DOOR</b>			
	2 X 6 - 8' #2 & BTR SPF	01052220	SLIDING DOOR FRAMING
	2 X 4 - 8' #2 & BTR SPF	01052050	SLIDING DOOR FRAMING
	149550 91/2 BOLT TROLLEY HANGER	10861040	SLIDING DOOR HARDWARE
	111082 8' COMBO TRACK & BRACKET	10860080	SLIDING DOOR HARDWARE
	119000 COMBO SPLICE COLLAR	10861030	SLIDING DOOR HARDWARE
	131000 PAIR OF TRACK END PLUGS	10861060	SLIDING DOOR HARDWARE
	185500 GALV DOOR STOP	10861090	SLIDING DOOR HARDWARE

# Barry County Lumber

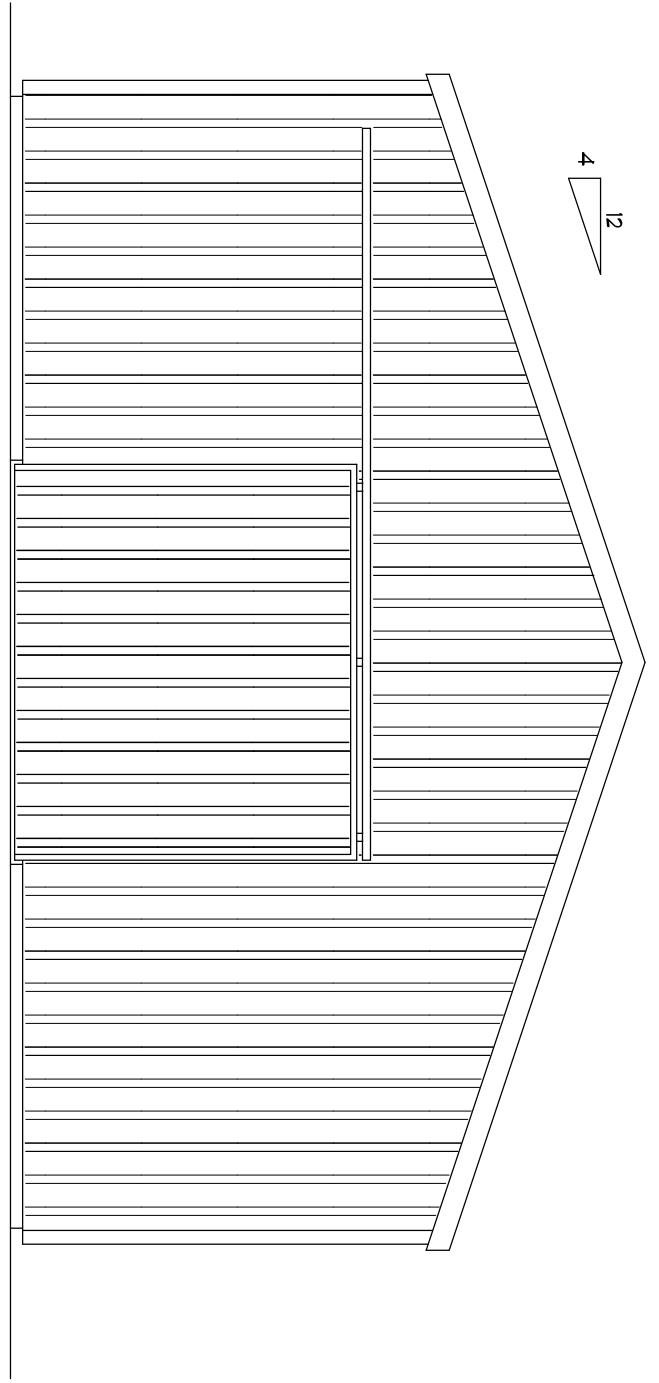
Since 1945

## 24 x 40 Standard Pole Barn Package

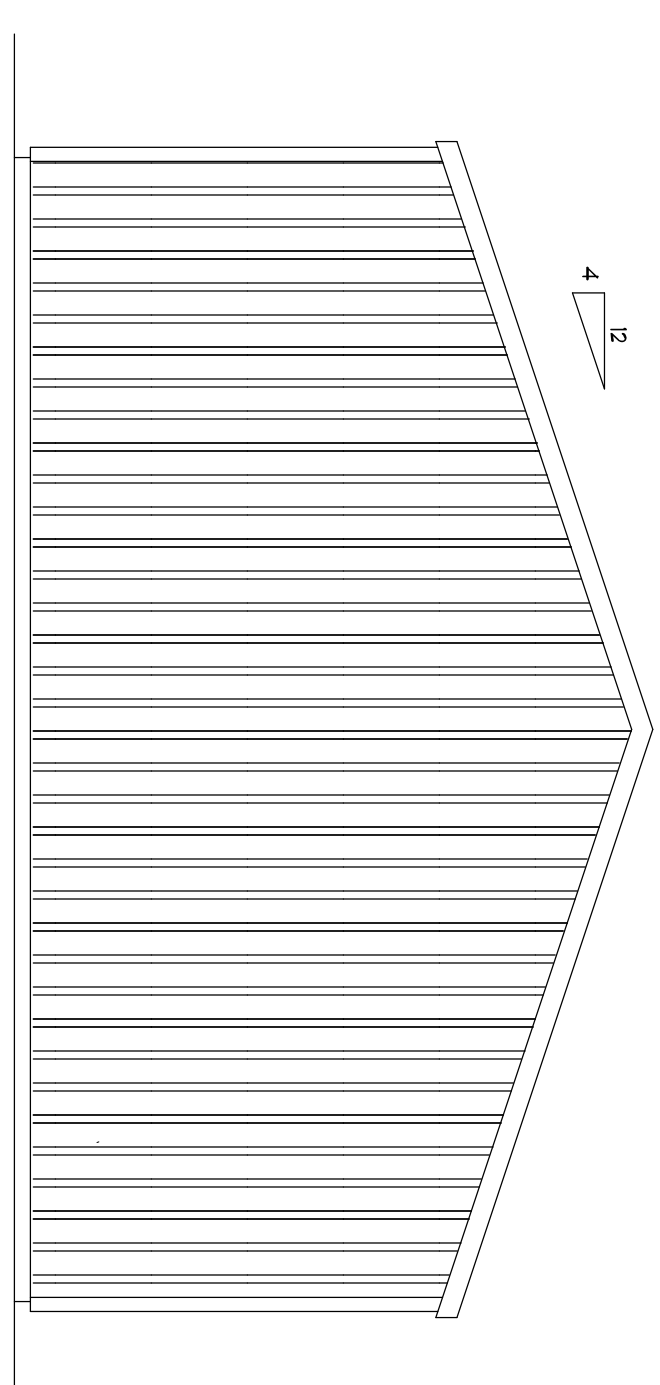
QTY	DESCRIPTION	ITEM #	USE
189000	ADJUST STAY ROLLER	10861100	SLIDING DOOR HARDWARE
188000	JAMB LATCHES	10861200	SLIDING DOOR HARDWARE
AH 5	WHITE TRACK COVER 10'2"	10860050	SLIDING DOOR HARDWARE
115000	STD TRACK COVER BRACKET	10861010	SLIDING DOOR HARDWARE
AJ3	GALV J-CHANNEL	10010000	SLIDING DOOR TRIM
AL6	GALV EDGE WRAP	10010000	SLIDING DOOR TRIM
AD1	GALV DRIP CAP	10010000	SLIDING DOOR TRIM
GRIII	GALV SDNG,7'PC	10010000	SLIDING DOOR TRIM
<b>FASTENERS</b>			
5-LB	1-1/2" GALV NEO NAIL	60274300	STEEL SIDING NAILS
25 LB	#16 GALV. ARDOX DECK	60266800	FRAMING NAILS
5-LB	5" GALV POLEBARN NAIL	60274240	FRAMING NAILS



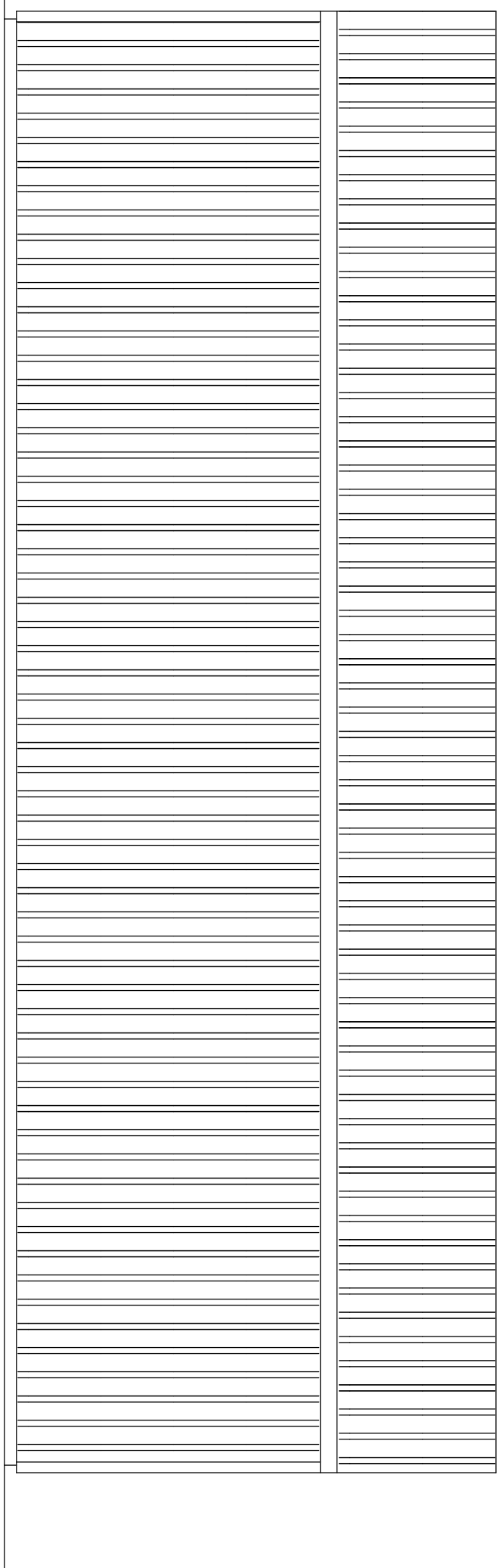
**LEFT ELEVATION**  
SCALE: 1/4" = 1'-0"



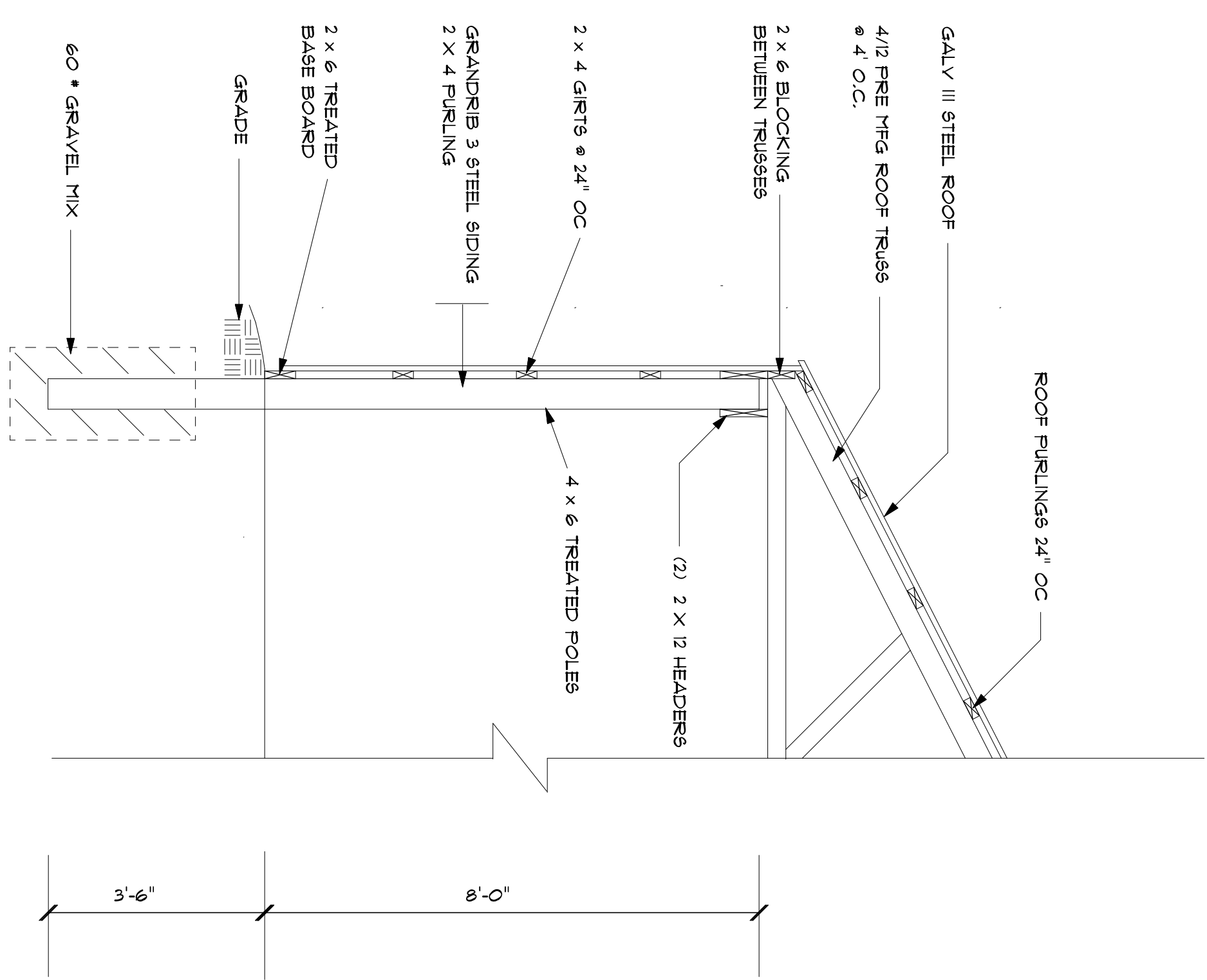
**FRONT ELEVATION**  
SCALE: 1/4" = 1'-0"



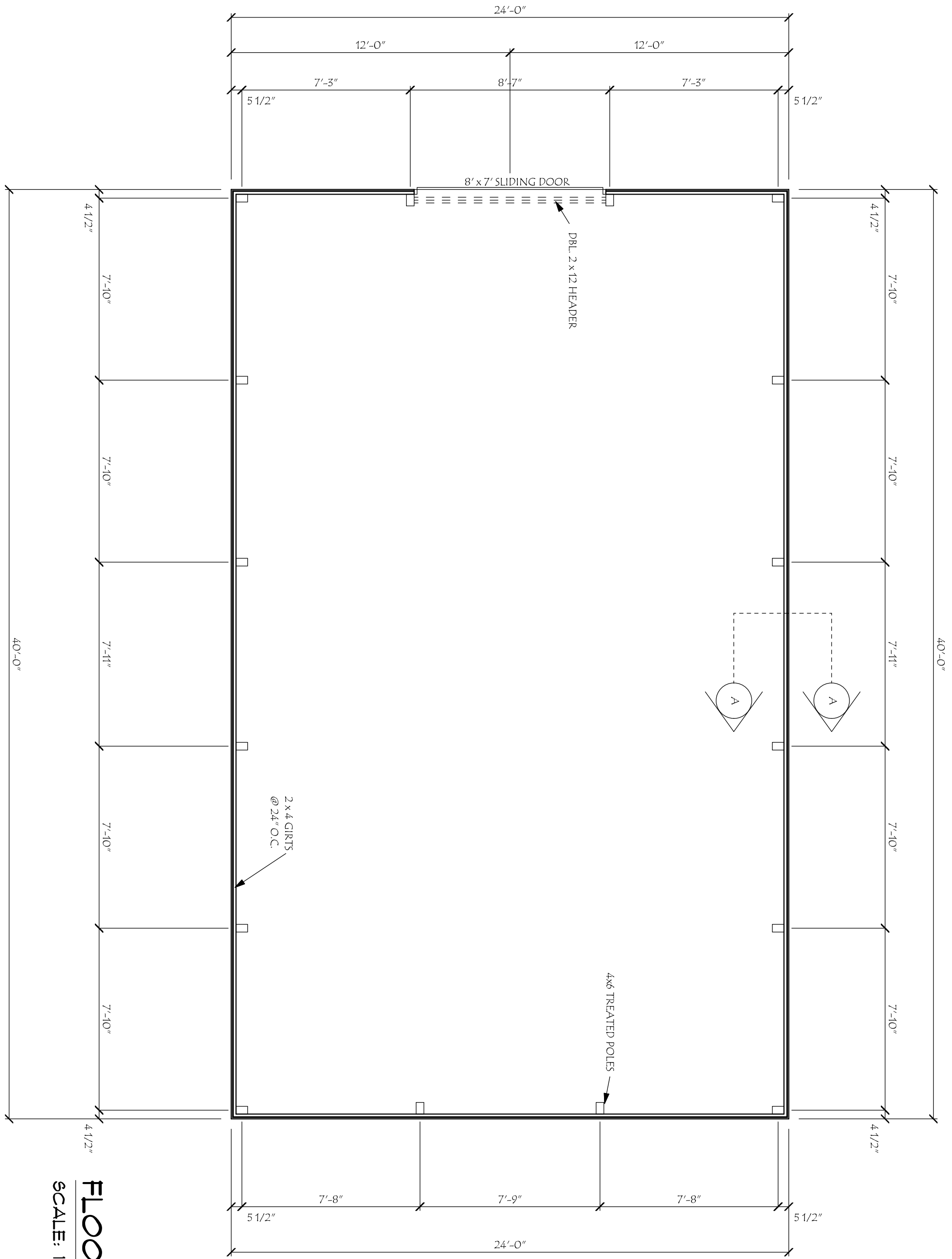
**REAR ELEVATION**  
SCALE: 1/4" = 1'-0"



**RIGHT ELEVATION**  
SCALE: 1/4" = 1'-0"



**SECTION A - A**  
SCALE: 1/2" = 1'-0"



**FLOOR PLAN**  
SCALE: 1/4" = 1'-0"

**Barry County Lumber**

Since 1945  
(616) 945-3431 ~ (888) 945-3431 ~ (616) 945-4020 (fax)  
225 N Industrial Park Drive ~ Hastings, MI 49058  
www.barrycountylumber.com

DRAWN FOR:		STANDARD POLE BARN PACKAGE 24 x 40	
SCALE:	AS NOTED	DATE:	12/26/05
DRAWN BY:	MJS	REVIEW:	
APPROVED BY:		CHECKED BY:	
		DRAWING NUMBER:	01024040

GREAT CARE AND EFFORT HAVE GONE INTO THE DESIGN AND ENGINEERING OF THE PLANS TO MEET THE SPECIFICATIONS SET FORTH BY THE CONTRACTOR AND/OR HOMEOWNER IN COMPLIANCE WITH BUILDING CODE REQUIREMENTS. CONTRACTORS SHALL VERIFY AND BE RESPONSIBLE FOR ALL DIMENSIONS, SPECIFICATIONS AND CONDITIONS ON THE JOB.