

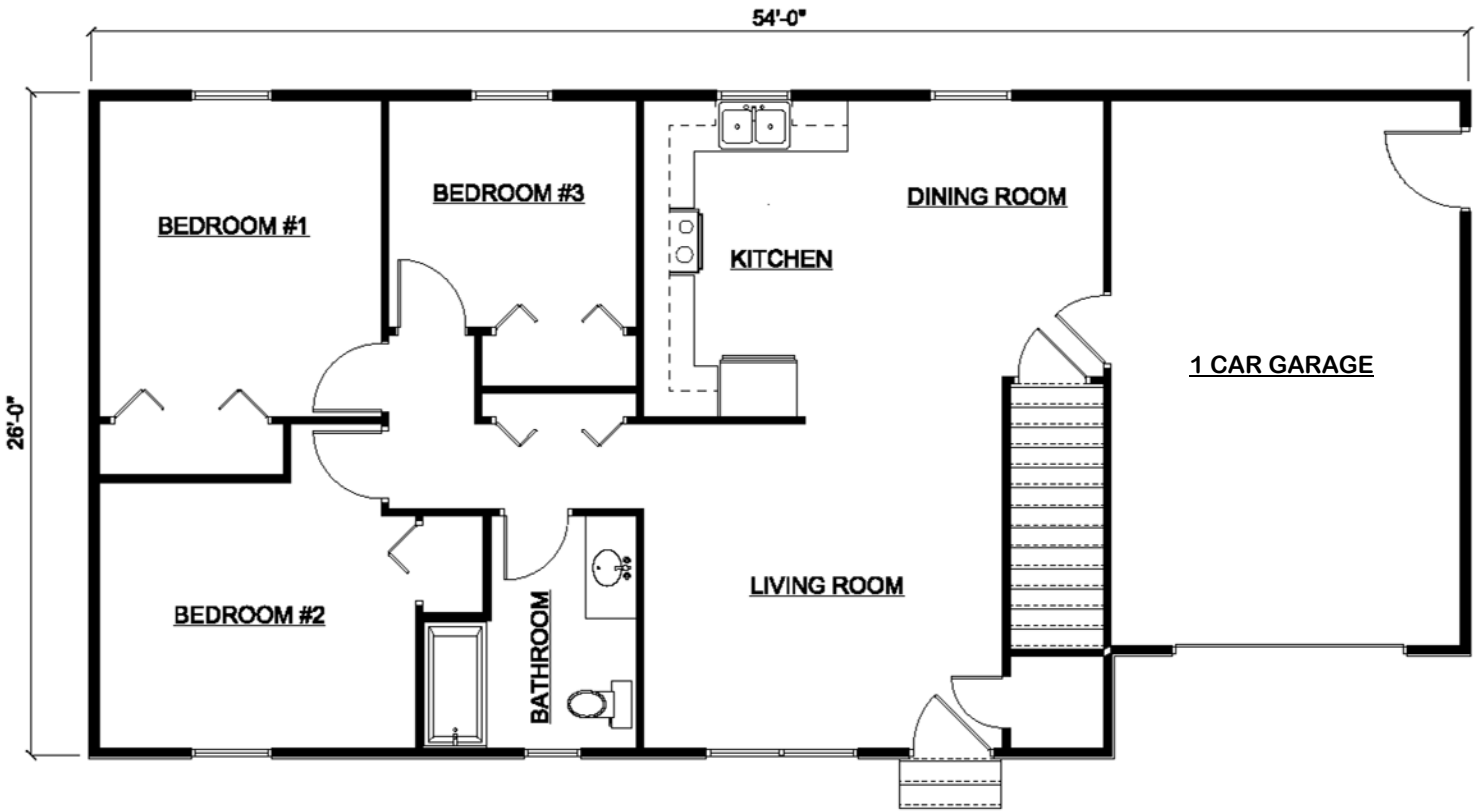
Thornapple



This affordable and functional home brings quality, efficiency, and traditional living to suit a range of budgets and lifestyles.

**Barry County
Lumber**

Since 1945



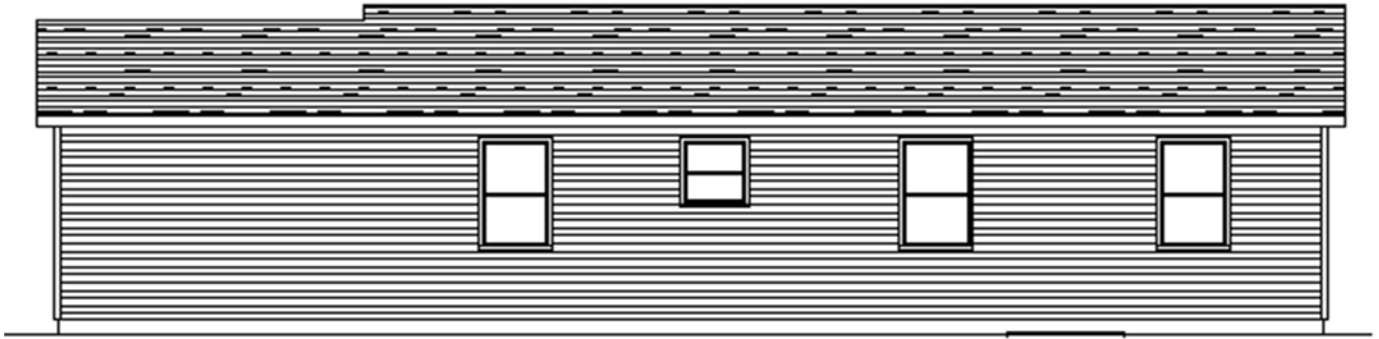
FLOORPLAN



FRONT ELEVATION

We proudly feature these brands in our package homes





REAR ELEVATION

- 3 bedrooms & 1 bath
- Attached 1 car garage
- Open kitchen - dining area
- 26' x 40' home w/ 1040 sq. ft
- Basement staircase for full basement foundation

Package Includes: Blueprints, Framing Materials, Tygar House Wrap, 2x10 Floor Joists, White Vinyl Double 4 Siding, Aluminum Soffit & Fascia, Fiberglass Insulation, Roofing w/Certainteed XT 25 Year 3-in-1 shingles, ThermaTru Exterior Doors, Andersen 200 Series Windows, Nails/Fasteners, Primed Interior Doors, Primed MDF trim, Homecrest Oak Cabinets, Laminate Countertops, Door Handles, Stair Parts, Garage Door & Opener.



Since 1945

Thornapple Home Package

\$

Quote # 3024458

Sales associate initials

Date

*Because of fluctuating lumber prices, this quote is good for 10 days. See sales associate for details.

Home Building Services



FREE ESTIMATES

Once all drawings and blueprints have been approved, we will provide you with an estimate free of charge. This estimate will include the necessary building materials that we would normally provide. All estimates are not created equal; therefore, we request that you allow us to help you accurately compare any other estimates you might obtain.

RESIDENTIAL DESIGN SERVICES

Custom house plans are available through our Residential Design Department and include rough and final version of floor plan, elevations, foundation/basement, and typical section. Pricing is determined by the square footage of your home. Please see our Contractor Department for more information.

BARRY COUNTY LUMBER SINCE 1945

Barry County Lumber has been independently owned and operated for more than 60 years. It is our mission to offer quality products and superior customer service - at a fair price. Barry County Lumber offers products and services that will best aid you in your project, no matter how large or small. We strongly believe that in order to better serve you, as our customer, we must also serve our local community as well. In addition to providing quality jobs to the area, we actively support local charities and organizations.

**Barry County
Lumber**

Since 1945

SERVICE IS OUR CORNERSTONE

Barry County Lumber places its highest priority on providing high quality service to our customers. In an effort to fulfill this priority, we have established several products and services within Barry County Lumber to meet and exceed the needs of our customers.

- Computer Aided Drafting (CAD) design for your custom home or remodeling project.
- Packages: homes, pole barns, garages, decks, & sheds
- Custom designed kitchens and bathrooms
- Hardware, paint, electrical, & plumbing supplies
- Rental Center with industrial tools & equipment
- Delivery services
- Brown's Carpet One & Custom Interiors
- OPEN 7 DAYS A WEEK, 361 DAYS A YEAR

225 N. Industrial Pk Dr. Hastings, MI 49058

Tel 269 945-3431 * Fax 269 945-4020 * www.barrycountylumber.com