

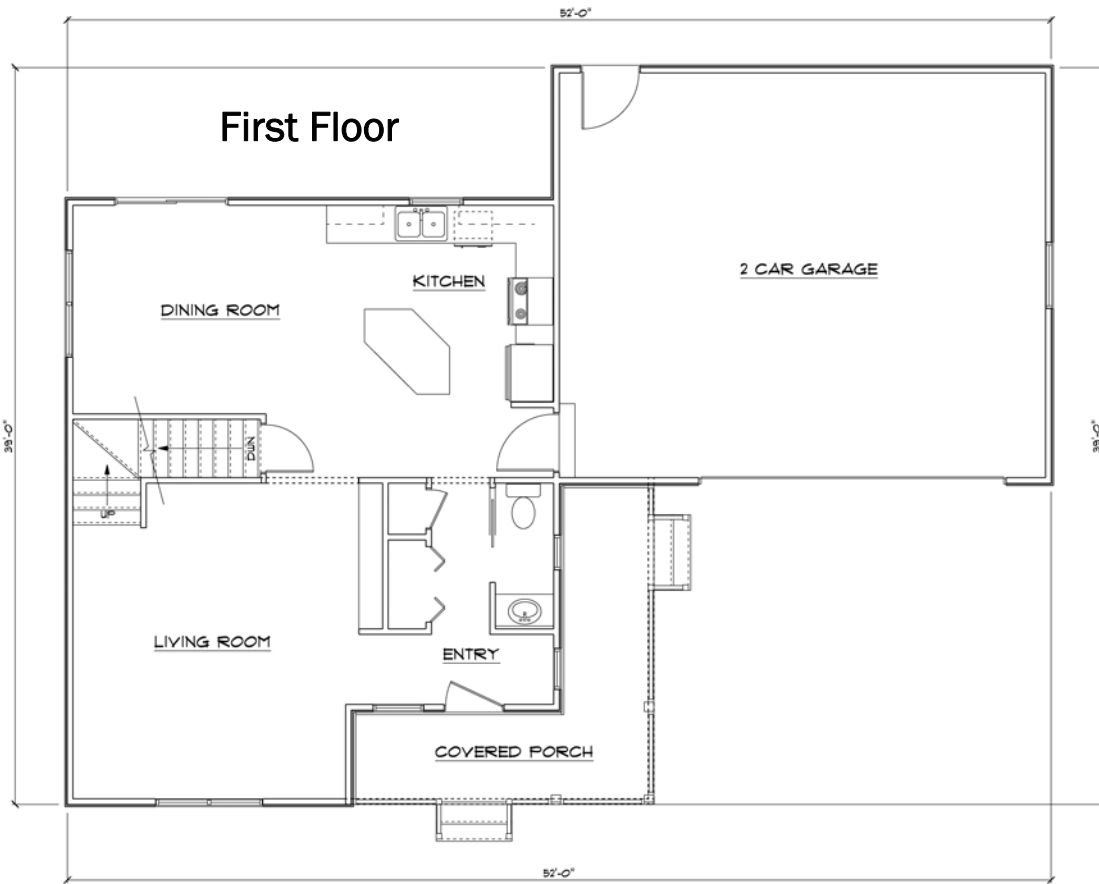
Betsie



This classic farmhouse has a lot of charm with a covered porch, spacious open floor plan, and patio doors leading to the backyard.

**Barry County
Lumber**

Since 1945



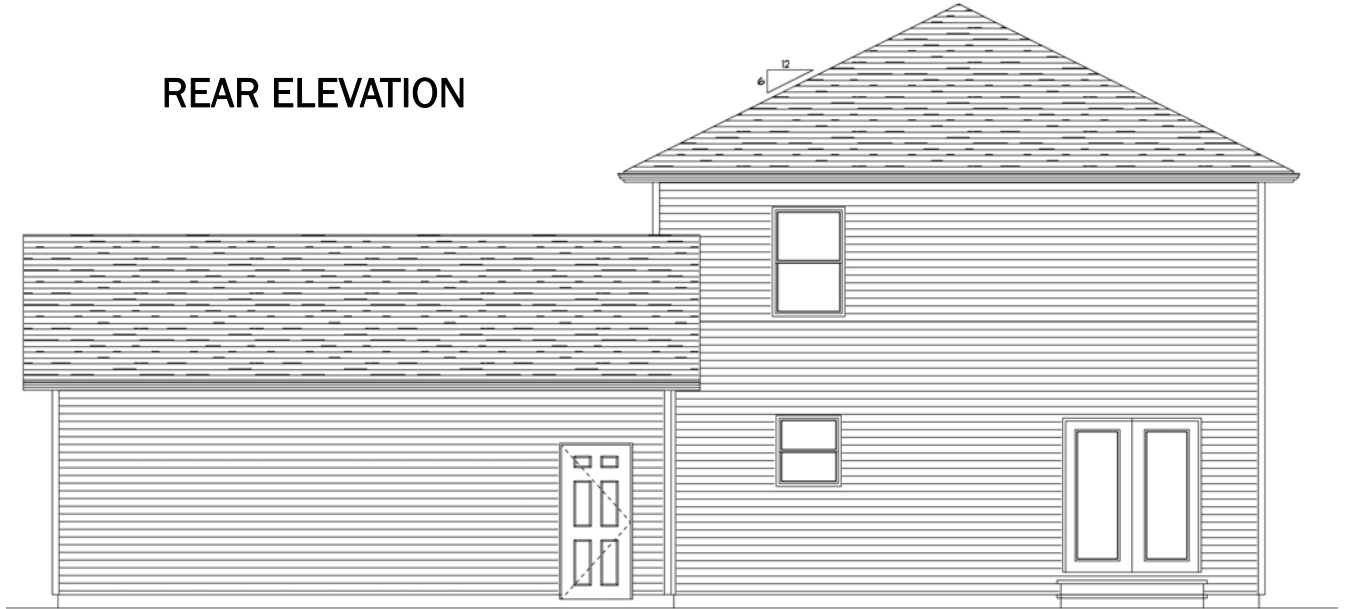
Second Floor



We proudly feature these brands in our package homes



REAR ELEVATION



- 26'x27' with 1554 square feet
- 3 bedrooms and 1-1/2 bath
- Open kitchen, dining, and living room with two car garage
- Covered porch
- Basement staircase for a full basement foundation

Package Includes: Blueprints, Framing Materials, Tytar House Wrap, I-Joist Floor Joists, White Vinyl Double 4 Siding, Aluminum Soffit & Fascia, Guardian Fiberglass Insulation, Roofing w/Certainteed Landmark Dimensional shingles, ThermaTru Exterior Doors, Andersen 100 Series Windows, Nails/Fasteners, Hardboard Primed Interior Doors, Primed MDF trim, Homecrest Oak Cabinets, Laminate Countertops, Door Handles, Stair Parts, Garage Door & Opener.



Since 1945

Betsie
Home Package

\$

Quote # 3038141

Sales associate initials

Date

*Because of fluctuating lumber prices, this quote is good for 10 days. See sales associate for details.

Home Building Services



FREE ESTIMATES

Once all drawings and blueprints have been approved, we will provide you with an estimate free of charge. This estimate will include the necessary building materials that we would normally provide. All estimates are not created equal; therefore, we request that you allow us to help you accurately compare any other estimates you might obtain.

RESIDENTIAL DRAFTING

Custom House Plans \$500.00, Additions \$350.00, Misc. Hourly Work \$60.00. Includes rough and final version of floor plan(s), elevations, foundation/basement, and typical section. Additional charges are \$30/hr. Earn up to a 50% rebate on your plan by purchasing the materials for your home from Barry County Lumber

BARRY COUNTY LUMBER SINCE 1945

Barry County Lumber has been independently owned and operated for more than 60 years. It is our mission to offer quality products and superior customer service - at a fair price. Barry County Lumber offers products and services that will best aid you in your project, no matter how large or small. We strongly believe that in order to better serve you, as our customer, we must also serve our local community as well. In addition to providing quality jobs to the area, we actively support local charities and organizations.

**Barry County
Lumber**

Since 1945

SERVICE IS OUR CORNERSTONE

Barry County Lumber places its highest priority on providing high quality service to our customers. In an effort to fulfill this priority, we have established several products and services within Barry County Lumber to meet and exceed the needs of our customers.

- Computer Aided Drafting (CAD) design for your custom home or remodeling project.
- Packages: homes, pole barns, garages, & sheds
- Custom designed kitchens and bathrooms
- Hardware, paint, electrical, & plumbing supplies
- Rental Center with industrial tools & equipment
- Custom deck design
- Delivery services
- Brown's Carpet One & Custom Interiors
- OPEN 7 DAYS A WEEK, 361 DAYS A YEAR

www.barrycountylumber.com | 269.945.3431
225 N. Industrial Pk Dr. Hastings, MI 49058

